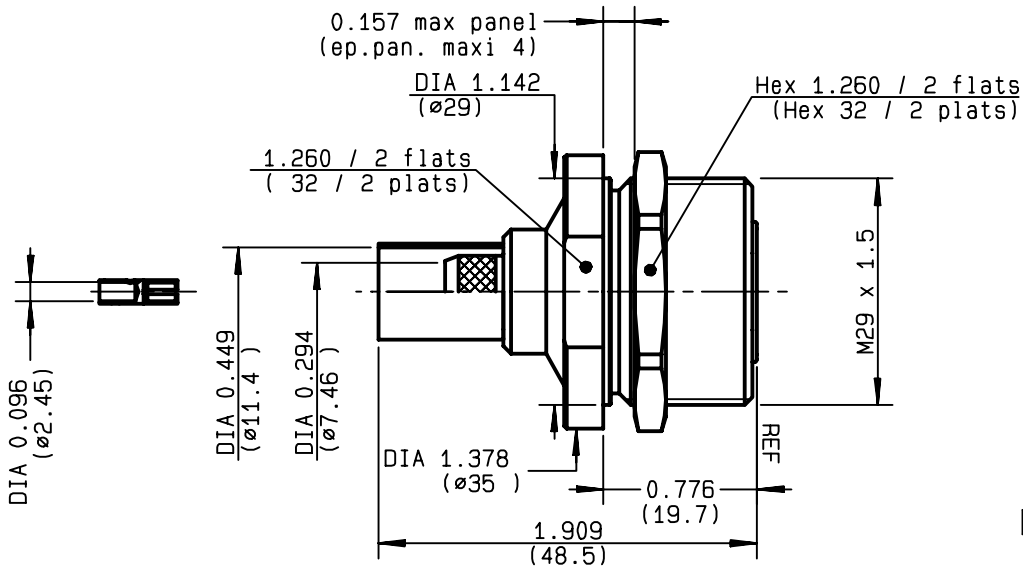
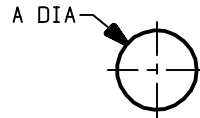


**STRAIGHT BULKHEAD JACK CRIMP TYPE
REAR MOUNT - CABLE 11/50 D**

R185.307.000
SERIES 7-16



PERCEGE PANNEAU
MOUNTING HOLE



A	MM		INCH	
	maxi	mini	maxi	mini
	29.2	29.1	1.150	1.146

NOMINAL IMPEDANCE	50 Ω
FREQUENCY RANGE	0-7.5 GHz
TEMPERATURE RATING	-55/+155 °C
V.S.W.R	1.20 + x F(GHz)Maxi
RF INSERTION LOSS	0.05 √F(GHz) dB Maxi
VOLTAGE RATING	1400 Veff Maxi
DIELECTRIC WITHSTANDING VOLTAGE	2700 Veff Mini
INSULATION RESISTANCE	10000 MΩMini
HERMETIC SEAL	NA Atm.cm ³ /s
LEAKAGE (pressurized only)	NA
MECHANICAL DURABILITY	500 Cycles
WEIGHT	gr
SPECIFICATION	

CABLES : **KX 13**
RG 214
RG 225

OTHERS CHARACTERISTICS

ROS :	1.10	a 3 GHz
CABLE RETENTION	250	N Mini
CENTER CONTACT RETENTION		
Axial force - mating end	200	N Mini
Axial force - opposite end	100	N Mini
Torque	NA	cm.N Mini
RECOMMENDED TORQUES		
Mating	NA	cm.N
Panel nut	600	cm.N
Clamp nut	NA	cm.N

CONNECTOR PARTS	MATERIALS	FINISH	(all values are given in micrometers)
BODY	BRASS	BBR 0.5 OVER SILVER 3	
OUTER CONTACT	BRASS	SILVER 5 OVER COPPER 0.5	
CENTER CONTACT	BERYLLIUM COPPER	SILVER 5 OVER COPPER 0.5	
INSULATOR	PTFE	-	
GASKET	-	-	
OTHERS PIECES	BRASS	BBR 2	

ISSUE	CREATION DATE	FILE PART-NUMBER
9944C00	11/05/1994	EPC96-02



RADIALL®

GAUTIER

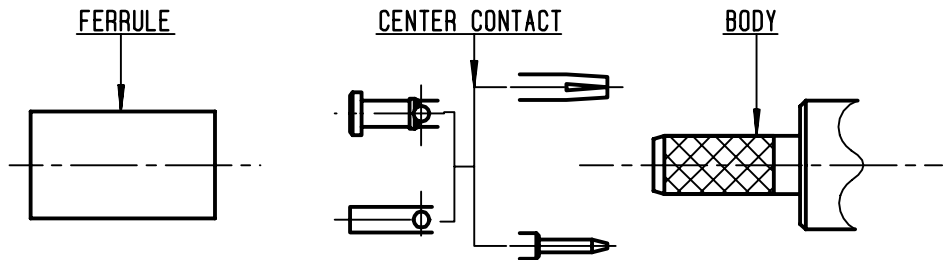
The information given here is subject to change without notice.
Design changes may be in order to improve the product .

Connect to the future



R185.307.000

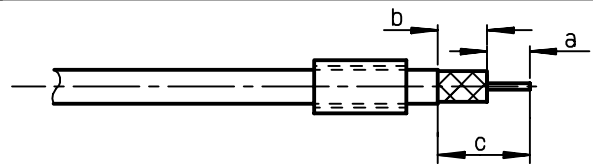
ISSUE **9944C00** SERIES **7-16**



①

Slide the ferrule onto the cable.
Strip the cable.

-
-

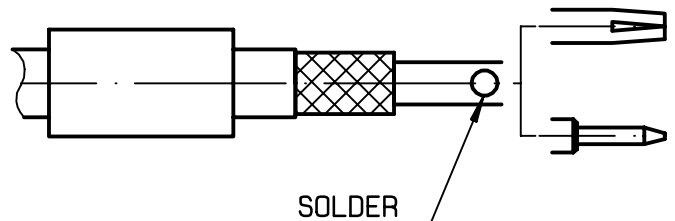


Stripping	a	b	c	d	e
inch	0.177	0.295	0.472	0	0
mm	4.5	7.5	12		

②

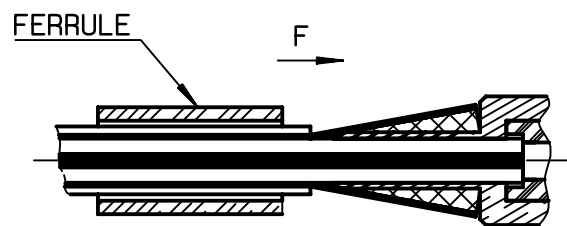
Solder the cable inner conductor into
centre contact .

-
-
-
-
-



③

Fan the braid.
Slide cable into body until it
bottoms.
Slide ferrule over the braid.
(In direction F)



④

Crimp the ferrule with crimping tool
R 282 231 000 (Hex. : 0.415) or
crimping tool R 282 293 000 (M22520/5-01)
and dies R 282 235 116 (Y 116 DANIELS)
Cut the excess of braid if necessary.

-
-
-
-

